

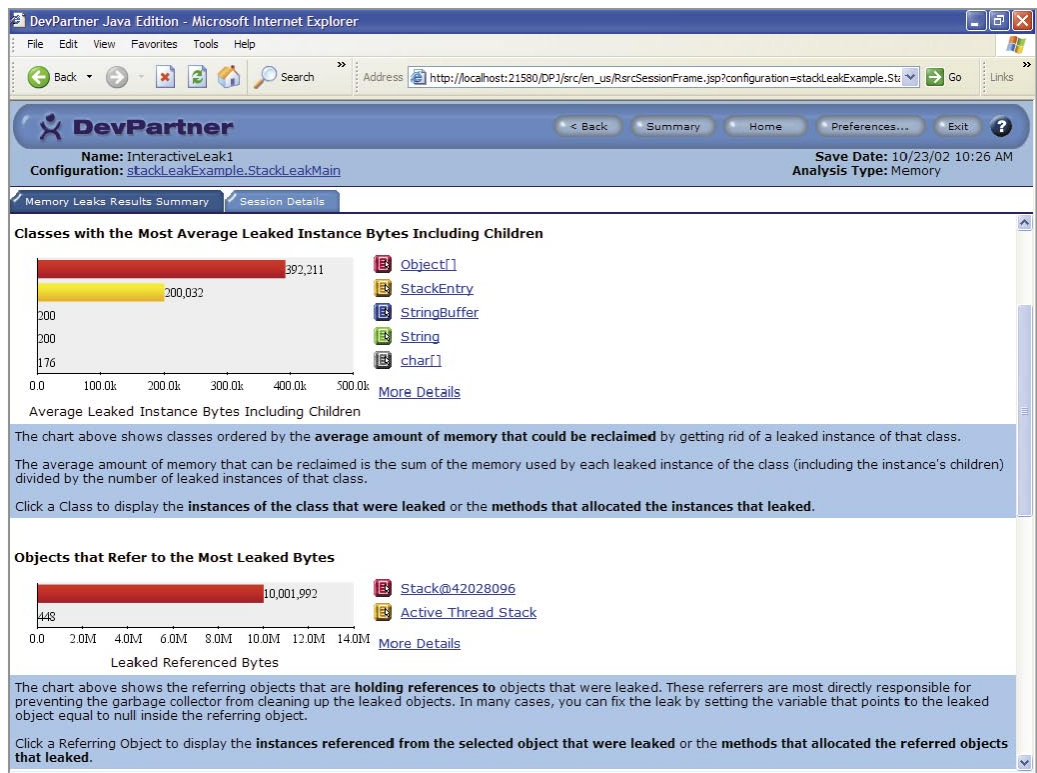
Deliver reliable, high-performance Java applications

DevPartner Java™ Edition accelerates Java development and testing by improving application reliability, scalability and performance.

DevPartner Java™ Edition is a suite of software development productivity tools that dramatically accelerates the development of reliable, high-performance Java applications and components. Accessed through an easy-to-use web browser interface, DevPartner uses powerful analysis and profiling techniques to help Java developers understand how their code performs before an application is deployed.

Distributed performance, memory and test coverage analysis on Solaris, Linux, HP, AIX and Windows

Developers often find themselves limited to analyzing and debugging a single tier or machine when tuning and testing Java applications. Not so with DevPartner. Using the DevPartner browser interface, developers can gather runtime information from any number of licensed clients and servers. Developers can analyze performance and coverage data on Java servlets, applets,



DevPartner Java™ Edition helps improve the efficiency and overall performance of applications.

JavaBeans and Enterprise JavaBeans—even from machines that do not have DevPartner tools installed. The collected information can then be viewed and analyzed on a workstation, providing an end-to-end view of distributed application components.

Solve memory-related problems quickly and easily

When Java applications use objects inefficiently, application stability, reliability and scalability can erode significantly. DevPartner helps developers examine and optimize object utilization

by automatically prioritizing memory-intensive methods and lines of code. Using real-time memory heap analysis and debugging, DevPartner helps developers quickly zero in on elusive memory problems that could take hours or days to find otherwise.

“Compuware DevPartner Java™ Edition was easy to set up. It has a crisp, clean user interface and its distributed front-end enables us to monitor and analyze tests in real time, right from our desktop, making quick and easy.”

Daniel Einspanjer, Software Engineer, ChoiceStream

DevPartner Java™ Edition makes memory analysis a repeatable process with the introduction of object retention analysis. Object usage is tracked and those unused objects that are in memory for a long period of time are easily discovered. Hard-to-find leaks that would be difficult to troubleshoot in a production environment are now easily discovered during development.

Using DevPartner, developers can:

- view any level of detail or summaries at any time and from any place—without leaving the browser
- determine if objects are being effectively used by methods, down to the line level
- detect large memory allocations that could be delayed or eliminated
- determine whether allocation-intensive code can be modified to allocate less frequently and reuse the allocated memory for the lifetime of the method
- determine object optimization for Java runtime components.

provides complete top-to-bottom performance profiling, including Java-interpreted code, JIT-compiled code, script code, third-party components, the virtual machine and underlying system code.

While the application is running, developers can take performance data snapshots or collect data continuously from start to finish. Afterward, the session data is displayed in an intuitive interface. Developers can navigate through the data, analyzing comprehensive timing statistics and data for applications, source files, libraries, methods and individual lines of code.

With DevPartner Java™ Edition, developers can find trends in performance for the modules that comprise an

Locate performance bottlenecks quickly

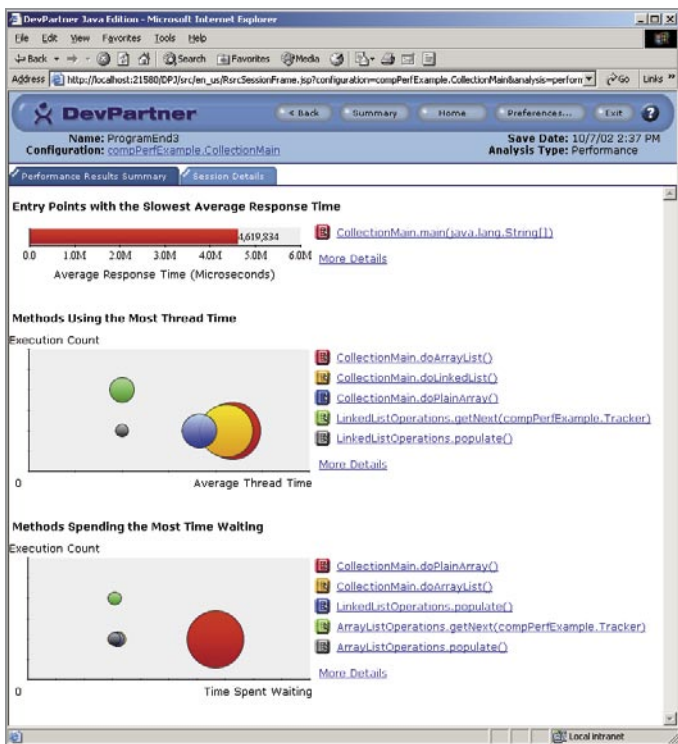
application. The contribution

of each part of the application is easily available; entire problematic modules can be uncovered instead of having to analyze an application by only looking at the slowest line of code individually. For each transaction, the time spent in the different tiers of the application is provided.

Developers can also define their own categories and find out how much time is spent in those for each transaction.

Locate performance bottlenecks quickly

DevPartner shows developers the precise location of performance bottlenecks, guiding them to the source of the problem without altering the environment. Multiple views of performance data provide details and priorities so developers can make correct optimization decisions. Unlike ordinary Java profilers, DevPartner



DevPartner Java™ Edition pinpoints performance bottlenecks automatically.

Using DevPartner, developers can:

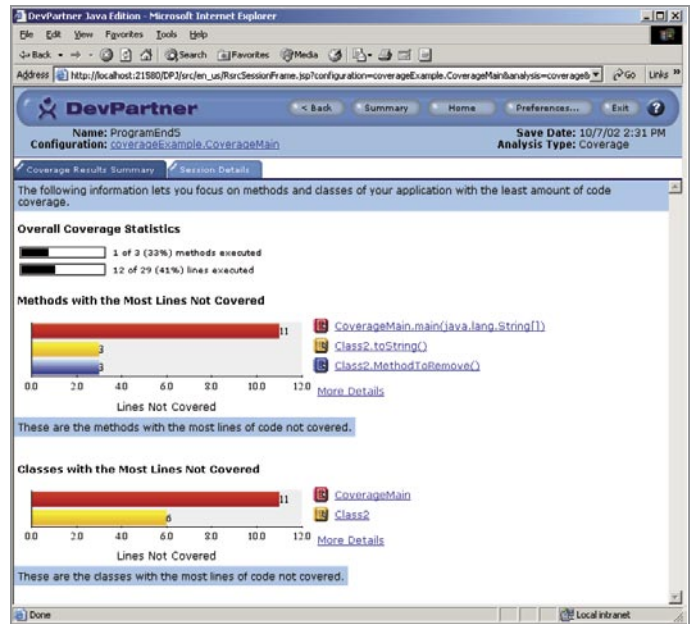
- use the prioritized view to determine the best return on tuning efforts based on statistics collected at the module and line level
- compare successive sessions by examining CPU execution and clock times
- see how many times each method was called during a session and the cumulative performance impact
- track the relationship between methods and objects in the call graph
- see how much time is spent for any tier or API type.

Unravel multi-threading problems

DevPartner includes a client- and server-side thread analyzer to help Java™ developers find thread-related deadlock problems during normal development and testing cycles. DevPartner provides insight not only into discovered deadlocks, but potential ones as well. The tool addresses problems in Java applications by watching the application execution paths and comparing them against all possible call path combinations to determine if a deadlock might occur—something static debuggers were not designed to do.

Locate untested code

DevPartner code coverage analysis automatically locates unexecuted code in applications and components throughout development and unit testing. DevPartner also identifies and analyzes the execution of volatile code: code that has changed, or is currently undergoing changes. This unique capability helps you understand the true quality of your testing efforts. DevPartner gathers comprehensive coverage information during development runs, quickly and easily gathering statistics and data for applications, components, classes,



Coverage data is gathered for Java applications, classes, methods and individual lines of code.

methods and individual lines of code.

Using DevPartner, developers and testers can:

- collect data across multiple tiers and systems to validate the completeness of testing efforts for distributed applications and measure code base volatility
- view coverage information while an application continues to run
- merge all session files into a single project summary
- focus on fixing problems and retesting only the modified portions of the code
- focus on specific areas of the application or environment.

Subscribe to ongoing value

Compuware is dedicated to providing industry-leading products supporting the development of distributed enterprise-level applications. Your investment in DevPartner becomes even more valuable as new capabilities are added to the product over time. The easiest and most cost-effective way to stay up to date is through a subscription program. Subscribers can obtain all product upgrades, at a fixed cost, regardless of the number of releases made during the year.

Supported environments

DevPartner Java™ Edition operates on a wide variety of platforms and operating environments, supporting popular Java Integrated Development Environments (IDEs) and application servers. Please visit the Compuware web site for detailed information on specific product configurations and version numbers.

DevPartner Java™ Edition supported technologies

Operating Systems		Java Virtual Machines	Web Browsers
HP-UX		HP	Microsoft Internet Explorer
IBM AIX		IBM	Netscape
Microsoft Windows		Sun	
Red Hat Linux			
Sun Solaris			
Application Servers		Integrated Development Environments	
BEA WebLogic		Borland JBuilder	
IBM WebSphere		Compuware OptimalJ	
Sun Java System		IBM WebSphere	
Tomcat		Eclipse	
Oracle		Oracle JDeveloper	

To learn more about DevPartner Java™ Edition, visit www.compuware.com/devpartner

Compuware products and professional services—delivering IT value

Compuware Corporation (NASDAQ: CPWR) maximizes the value IT brings to the business by helping CIOs more effectively manage the business of IT. Compuware solutions accelerate the development, improve the quality and enhance the performance of critical business systems while enabling CIOs to align and govern the entire IT portfolio, increasing efficiency, cost control and employee productivity throughout the IT organization. Founded in 1973, Compuware serves the world's leading IT organizations, including more than 90 percent of the Fortune 100 companies. Learn more about Compuware at www.compuware.com.

Compuware Corporation Corporate Headquarters
 One Campus Martius
 Detroit, MI 48226

For regional and international office contacts, please visit our web site at www.compuware.com



All Compuware products and services listed within are trademarks or registered trademarks of Compuware Corporation. Java and all Java-based marks are trademarks or registered trademarks of Sun Microsystems, Inc. in the United States and other countries. All other company or product names are trademarks of their respective owners. © 2005 Compuware Corporation