

## Application Monitoring Throughout the Application Lifecycle

AVIcode

# Intercept Studio 3

*The unparalleled always-on monitoring solution for .NET applications.*

**Organizations around the world** are turning to AVIcode Intercept Studio to provide a flexible, comprehensive monitoring solution for detecting application errors and performance degradations in real-time. A proven solution with minimal impact on system resources, Intercept Studio is as ideally suited for diagnosing in-production application errors as it is for monitoring applications in development and QA.

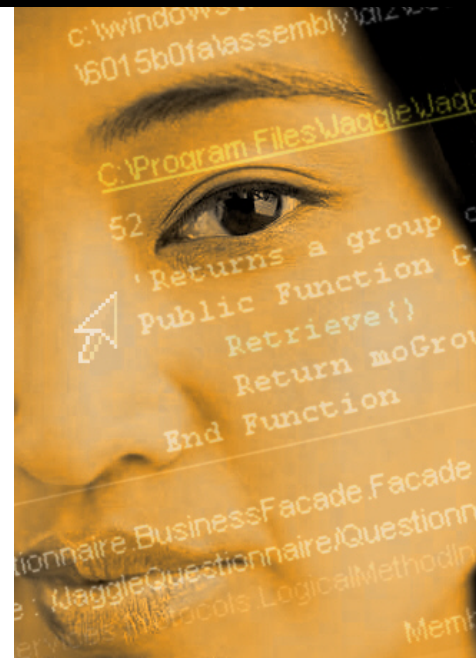
**Intercept Studio makes it easy** to proactively detect and diagnose application errors when they occur, helping to improve problem resolution and ensure application reliability and availability. Right out-of-the-box, Intercept Studio can begin monitoring your .NET 2.0 and 1.1 applications for code errors, security and connectivity issues, and performance bottlenecks.

**Intercept Studio reduces troubleshooting costs** by drastically reducing the overhead involved in error detection and resolution. Rather than relying upon end users and interdepartmental efforts to detect and resolve application errors, Intercept Studio automatically identifies the precise cause of application errors and delivers actionable "root cause" information to the appropriate IT team for immediate diagnosis. This eliminates traditional finger pointing, reduces costs, and ensures rapid error resolution.

**Intercept Studio protects software investments** by leveraging existing instrumentation, enabling all event data to be captured and correlated to quickly pinpoint problem areas that require immediate attention. Intercept Studio minimizes on-going development costs and application time-to-market, while ensuring the fastest possible problem resolution for in-production applications.

**Intercept Studio adheres to industry standards**, including IT Infrastructure Library (ITIL) standards. Intercept Studio features ITIL-based incident management with Microsoft Visual Studio Team Foundation Server (TFS), allowing organizations to comply with industry best practices for application implementation and management. In addition, Intercept Studio integrates seamlessly with WMI-compliant operations management systems like Microsoft Operations Manager, and with most standard defect tracking systems.

**Intercept Studio delivers unsurpassed insight** into application health and behavior. Robust reporting helps organizations identify critical hotspots and availability trends. By enabling application performance analysis, Intercept Studio allows organizations to establish metrics and benchmarks for application behavior, and provides the information needed to improve application support processes.



*"AVIcode's product effectively monitors .NET applications with low overhead in an always-on state, helping us cut the time to resolve software application errors in half."*

- Akin Agar  
Manager of Internet Services  
NetBank

*"We have found AVIcode Intercept Studio to be an invaluable tool for finding and eliminating deep-rooted code defects."*

- Charles J. Smith  
Computer Science Corp. Consulting  
Group Partner

*AVIcode's Intercept Studio is a "powerful and easy-to-use tool that performs a vital function for any business running mission-critical .NET applications."*

- SQL Server Magazine  
February 2006



# Intercept Studio 3

## Reducing Risk throughout the Application Lifecycle

Whether saving time and costs by reducing instrumentation requirements in development, automatically collecting root cause information for errors generated during integration testing, or diagnosing the real issues your users encounter, Intercept Studio is the most complete and valuable application monitoring solution available.

## Key Features

### Real-time Monitoring

- Requires no instrumentation or recompiling
- Monitors ASP.NET, Web Services, .NET Remoting, COM+, COM Interop, WinForms, Console Applications, and Windows Service Applications
- Always on identification and isolation of code failures, security and connectivity issues, and performance degradations
- Monitor and measure service level delivery

### Root Cause Information

- Collects the complete call stack and object state
- Gathers all function parameters and local and member variables
- Isolates the precise line of problem code
- Detects resource-specific bottlenecks (e.g. SQL, LDAP, TCP/IP)
- Incorporates events generated via instrumentation

### Enterprise Security

- Permits multiple user groups to use a single viewer console
- Complete control and definition of user access to events
- Supports Windows and Custom authentication
- Does not compromise firewall security

### Configuration and Customization

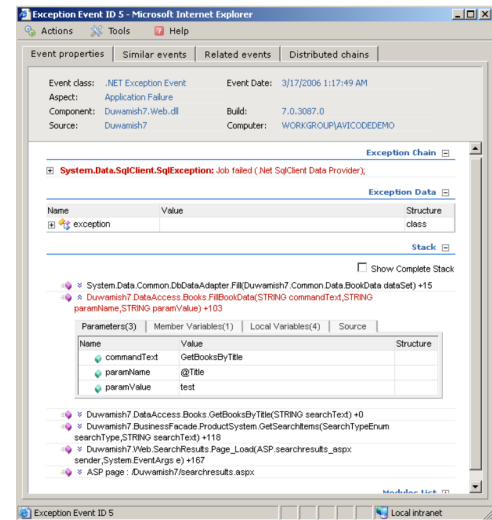
- On-the-fly configuration of data collection thresholds and triggers
- Ability to consolidate and group events by cause or component
- Enables custom definition of critical exceptions for custom exception handles

### Non-intrusive

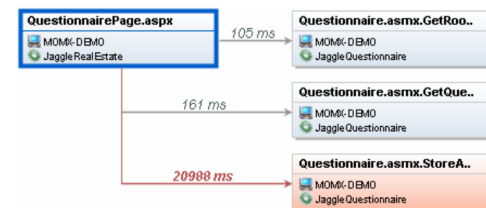
- Event throttling ensures minimal resource usage
- Small footprint has no significant impact on performance

### Historical Event Reporting

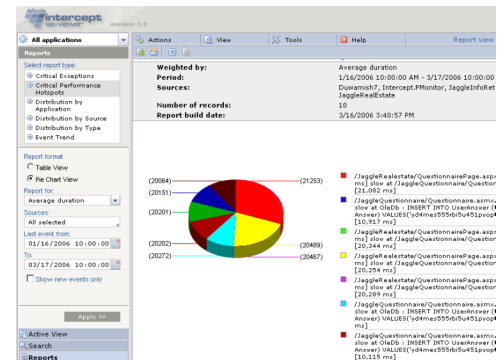
- Critical exception and performance hotspots
- Identify application availability and behavior trends
- Better insight into IT processes



Complete root cause fault analysis



Graphical event chains isolate bottlenecks



Critical hotspot reporting

For more information about AVIcode and Intercept Studio, please visit our website at [www.avicode.com](http://www.avicode.com) or call 443.543.0030. □