



see. think. respond.

PowerConvert™ for consolidation

HIGHLIGHTS

Server Consolidations

Reducing the overhead of underutilized systems running on poorly matched hardware is a challenge face by almost every data center managers. Many have invested in virtual server technologies to address this issue, yet are finding that they are challenged with quickly achieving a return on investment through maximizing the utilization of their virtual servers.

With PlateSpin PowerConvert, server consolidation activities can be quickly and easily executed from a single point of control. Since no contact is required with either the source or target machine, there are no geographic boundaries to your consolidation.

Accelerate the speed to ROI for your virtual infrastructure

Data center managers are challenged with quickly realizing their investment in virtual infrastructure. To accelerate the time to ROI, managers must maximize the utilization of new virtual hosts, and reduce the number of underutilized systems running on poorly matched hardware.

Manually rebuilding server environments is laborious, requiring intimate system knowledge and extensive testing. With a simple drag and drop, PlateSpin PowerConvert creates and configures the new machine as a physical server or a virtual image. Files are copied directly from the source to the target, automatically updating the drivers and system files in the process. You can change host names, IP addresses, select which drives to copy and even resize them in the process, all from a single point of control.

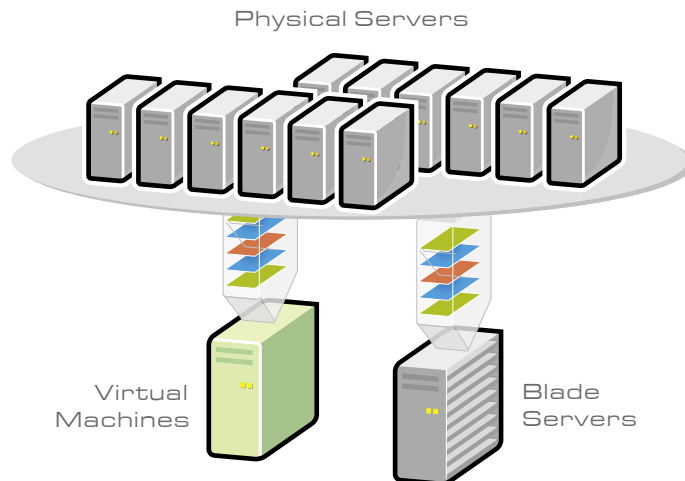
Manage by Exception with "Lights-out" Conversions

Remote and concurrent execution of discovery, conversion and deployment tasks eliminates the need to physically visit servers. Schedule deployments in advance to run during your maintenance window, or at the time most convenient for your IT operations. Email notifications allow you to manage your conversions by exception, and use your time to attend to other critical tasks rather than monitoring the process.

Accelerate server consolidations with 100% automated migrations between Physical Servers and Virtual Machines.

PlateSpin® PowerConvert™ for Server Consolidation is a powerful, fully automated OS Portability™ solution that enables the complete interchange of data, applications, and operating systems from physical servers to virtual machines.

PlateSpin PowerConvert is essential for large scale server consolidation projects. With a simple drag-and-drop through the intuitive graphical user interface, a physical server or virtual machine server running Windows or Linux can be converted into a fully functional virtual machine hosted on VMware ESX Server, VMware GSX Server, Microsoft Virtual Server 2005, or a PlateSpin Flexible Image file. No physical contact with the source or target machines is required allowing the flexibility to perform the consolidation from anywhere.



100% Automated Server Consolidations

Automate the consolidation process, moving data, applications, and operating systems from numerous physical servers onto few virtual machines and/or blade servers.

KEY FEATURES

Physical to Virtual Migrations

Migrate data, applications, and operating systems between physical servers, virtual machines, and server archives

Maximum adaptability with On-the-fly configuration

Reconfigure and right-size CPU, Disk, Memory and Network resources on-the-fly for target machines.

100% Automated Concurrent Conversions for "Lights Out" Consolidations

No boot CDs. No physical contact with source or target machines required. Configure multiple conversions to run concurrently, all from a single point of control.

Reusable and Flexible Images

Reuse, and redeploy PlateSpin Flexible Images, or Third Party Images, over and over, across heterogeneous server environments.

PlateSpin® PowerConvert™

for Consolidation

KEY FEATURES AND BENEFITS

Automated Physical-to-Virtual Conversions

Accelerate consolidation projects

Automatically convert physical servers to virtual machines on VMware or Microsoft virtual infrastructures. The resultant virtual machine is a replica of the original source machine with the operating system, applications and data intact.

Automatic Discovery

View your entire landscape for easy deployment

Automatically discover your existing physical or virtual machines through the network, without agent installations or boot CDs. You get complete hardware, OS and application inventory to help you identify servers for consolidation without needing to be in physical contact with the source or target servers.

Remote Control

Reduce overhead through a remote and single point conversion control

No boot CDs and no physical contact with source or target machines is required, saving time and enabling accelerated server consolidation projects, regardless of geography.

On-the-fly Configuration

Adapt quickly to available resources

Reconfigure and right-size CPU, disk, memory and network resources on-the-fly to adjust to target machine resources and match workload needs. Change critical parameters on restore and right-size the target to match workload needs.

PlateSpin Flexible Images

Tackle geographical consolidation with virtualization

Server consolidation in geographically dispersed locations with limited bandwidth can be difficult. Capture server images remotely without the need to visit servers, saving time and human effort, then transport the images to the target location for simple deployment to virtual machines.

Source System Integrity

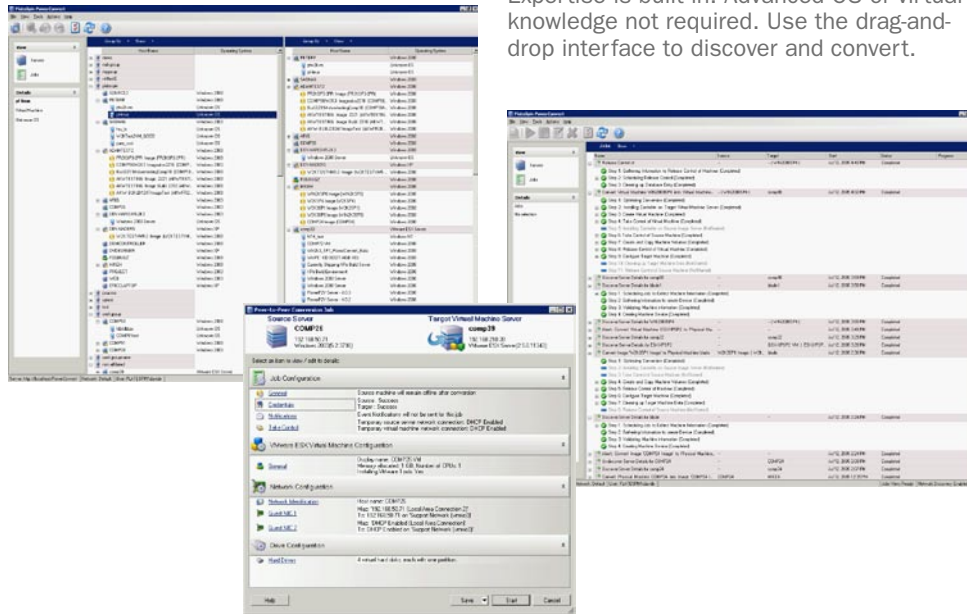
Minimizes risk

Source systems remain unchanged. After the conversion, just restart the source machine and you're production-ready.

Drag and Drop Interface

Reduces the learning curve and shortens the time to convert

Expertise is built in. Advanced OS or virtual knowledge not required. Use the drag-and-drop interface to discover and convert.



© 2005 PlateSpin Ltd. All rights reserved. Microsoft, Windows and Windows NT are registered trademarks of Microsoft Corporation. Linux is a registered trademark of Linus Torvalds. All other marks and names mentioned herein may be trademarks of their respective companies.

PLATFORM SUPPORT

PlateSpin PowerConvert supports multiple hardware, operating systems, disk images, and virtual infrastructures:

Virtual Infrastructure

- VMware® ESX Server 2.1 and higher
- VMware® GSX Server for Windows 3.0 and higher
- Microsoft Virtual Server

Operating Systems

- Windows NT Server (SP4, SP6a)
- Windows 2000 Server
- Windows 2000 Advanced Server
- Windows 2003
- Windows XP Professional
- Redhat Linux (7,8,AS,3.0, ES 3.0)

SYSTEM REQUIREMENTS

PowerConvert Server

- Windows 2000 Server (SP4)
- Windows 2000 Advanced Server (SP4)
- Windows 2003 Server

PowerConvert Client

- Windows 2000 Server (SP4)
- Windows 2000 Advanced Server (SP4)
- Windows XP
- Windows 2003 Server

IIS and the .NET Framework 1.1 SP1 (including ASP.NET) must be installed prior to installing the PowerConvert Server and Client

Disk requirements

- 1.5 GB of free disk space

Memory requirements

- Minimum 512 MB of RAM

PlateSpin Ltd.
144 Front Street West
Suite 385
Toronto, Ontario
CANADA M5J 2L7

phone: 416.203.6565
fax: 416.593.5557
toll free: 1.877.528.3774
email: sales@platespin.com
www.platespin.com

Version 5.0 Data Sheet



see. think. respond.