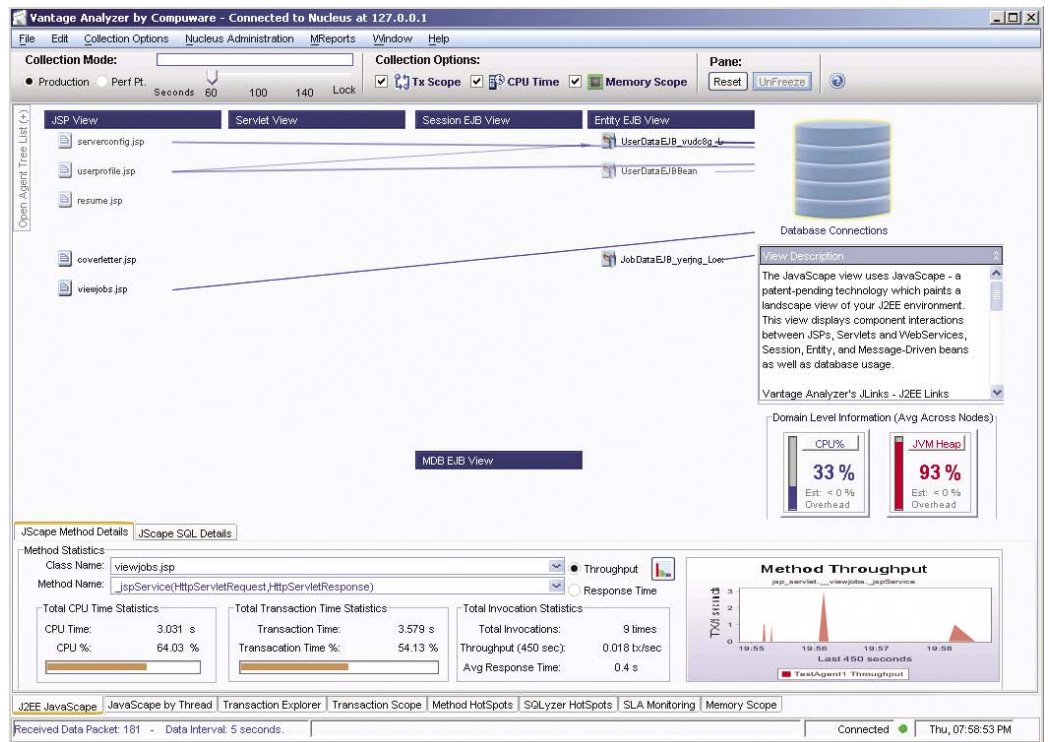


Deliver superior application service for J2EE applications

Vantage Analyzer for J2EE™ is the premiere J2EE performance monitoring and analysis solution that helps IT organizations improve application service. It directs users straight to the source of performance problems using unmatched visibility and detailed transaction analysis without draining production resources.

Rolling out reliable, high-performance J2EE applications has presented IT staffs with new challenges. Given the sophisticated features and nuances of J2EE application environments, IT staffs often lack the expertise required to pin down the causes of poor application response times. Current tools don't always observe performance characteristics of the application code, leaving IT staffs hunting for more answers, which, as a result, slows the resolution process to a crawl.

For applications that demand rigorous testing, the sophistication of J2EE applications make it hard to find and correct problems in test environments. Without the right tools, performance and scalability problems can be just as hard to pinpoint and resolve when simulating production loads in testing as they are in production. And as IT staffs struggle to resolve problems in testing, the pressure to roll the application into production continues unabated.



Vantage Analyzer for J2EE™ clearly shows current J2EE server activity.

What's needed is a solution that can open the proverbial J2EE "black box" to provide not only a broad overview of the production environment, but also the deep insight needed to pinpoint exact locations of code-level performance problems—in production and test environments. IT staffs need a tool that can help them quickly tackle performance

problem backlogs, stabilize poorly performing applications and align business requirements with proactive service-level management.

Compuware Vantage Analyzer for J2EE™ provides these capabilities with a technology that delivers a visual landscape of J2EE component-based performance metrics and

component interactions. With Vantage Analyzer for J2EE™, IT staffs get the critical analysis capabilities they need for performance troubleshooting and tuning. What's more, the powerful monitoring and analysis features of Vantage Analyzer for J2EE™ can be put to use right out of the box—it's ready to go without hours of installation and configuration.

Pinpoint performance bottlenecks

When you encounter a production performance problem, Vantage Analyzer for J2EE™ provides both a high-level view of the entire J2EE workload and in-depth detail on specific execution paths, giving operations personnel the ability to easily locate problems and gather the detailed information needed to hand the problem off to the right experts (DBAs, network and systems administrators, application developers). No other product on the market provides this flexibility and scope to observe cumulative activity—without impacting production application resources—and

then easily zero in on the problem for deep J2EE analysis.

As J2EE tiers interact with each other, the JavaScope View identifies interactions and response times via connection lines that grow as the transaction time increases. The displayed components reflect abnormal or extended transaction times, as well as large throughput requests, enabling you to quickly identify long-running transactions, methods and/or SQL calls.

Vantage Analyzer for J2EE™ also offers a view of all method calls, known as the Transaction Explorer. With the Transaction Explorer, you can see the performance of JSPs, Web services and servlets, and EJBs.

Unique to Vantage Analyzer for J2EE™ is its ability to collect not only wall-clock transaction response times, but also time spent in CPU executions, so you can determine whether a transaction is slow because it is executing code or waiting on other application tiers. Calculating at the microsecond level, the precision of Vantage Analyzer for J2EE™ helps you fine-tune your most business-critical applications.

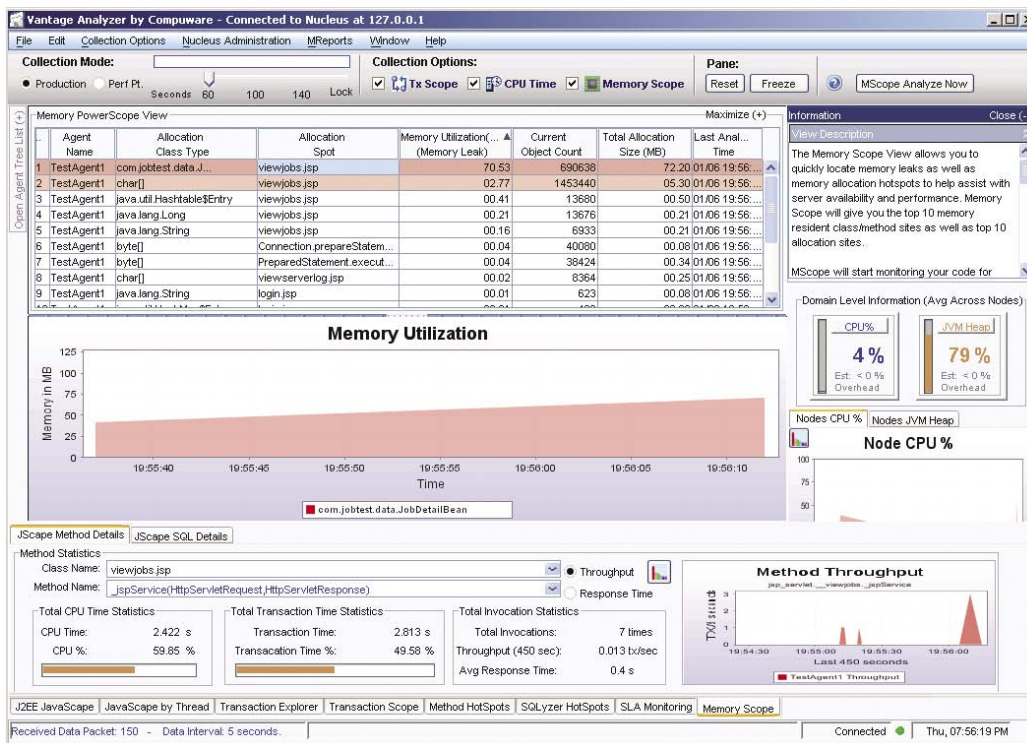
A solution optimized for production

Other J2EE application monitoring solutions gather data using a Java-based agent, which causes the monitoring overhead to increase linearly

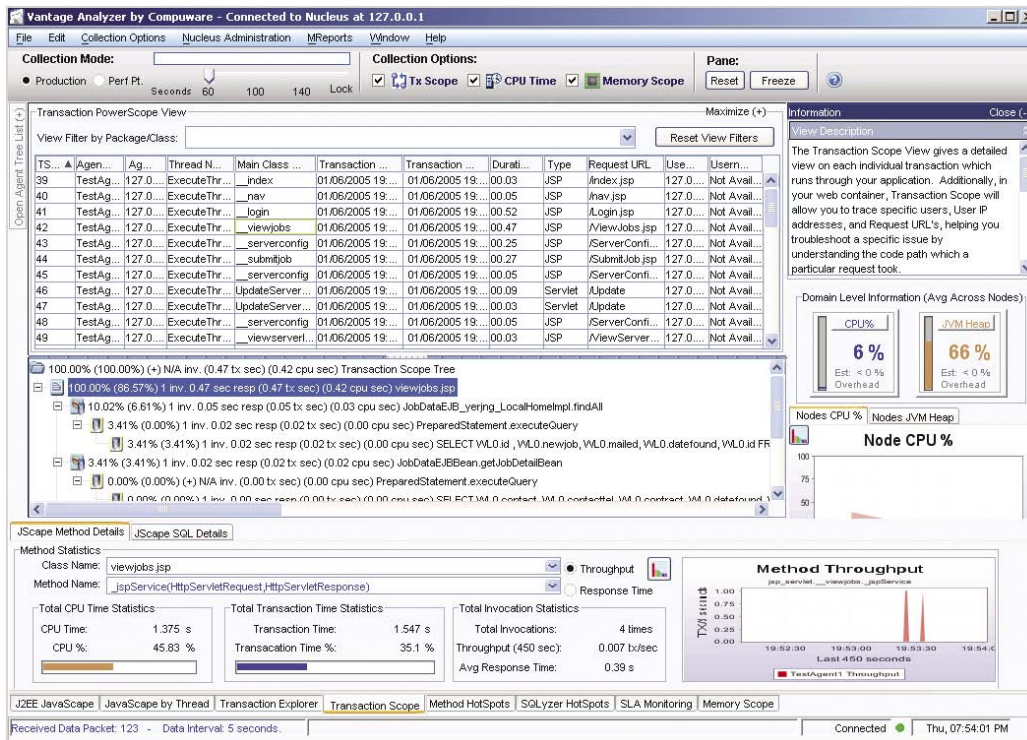
with application load. In order to keep CPU overhead down, Vantage Analyzer for J2EE™ utilizes several intelligent profiling techniques to minimize performance overhead. As a result, you can gather performance metrics without adversely affecting your application. You don't need to figure out what portions of your code to monitor or bring production servers down to make monitoring changes. In addition, Vantage Analyzer for J2EE™ calculates its overhead at startup, which you can customize for your hardware bus and CPU speed, as well as memory I/O. Vantage Analyzer for J2EE™ contains automatic internal throttling to ensure your CPU—rather than the monitor—is optimized for your application's needs.

Simplify the hunt for memory leaks

Finding memory leaks in J2EE applications is akin to finding the proverbial needle in a haystack—unless you use Vantage Analyzer for J2EE™. Its revolutionary memory profiler plug-in identifies memory leaks and high memory allocation sites automatically, allowing your operations and development teams to focus on problem resolution.



The Memory Scope View allows you to quickly locate memory leaks as well as memory allocation hot spots to help assist with server availability and performance. Memory Scope will give you the top 10 memory resident class/method sites as well as the top 10 allocation sites.



Vantage Analyzer for J2EE™ allows deep application drill-down, pinpointing where performance problems occur. It even collects CPU measurements at the method level.

Real-time, around-the-clock awareness

Vantage Analyzer for J2EE™ provides proactive measures for meeting your transaction response time requirements. Its visual landscape and component interaction map can be configured to trigger alarms, such as sending a page or e-mail, to alert administrators of degraded performance, resource starvation, hung transactions, system response time issues or the approach of system transaction capacity.

Effectively communicate J2EE performance

Vantage Analyzer for J2EE™ contains an internal reporting system that allows for report creation in various formats such as PDF, HTML and CSV. Reports include node CPU and JVM heap utilization, the top ten worst-performing methods (JSP, servlets and EJBs), as well as the top ten worst-performing SQL calls. These reports can be used to compare releases and ensure quality control throughout development and QA life cycles.

Vantage: A complete view for application service management

Vantage Analyzer for J2EE™ is part of Compuware Vantage, an application service management solution that helps IT staffs manage application performance from the perspective that matters most: the end-user. Vantage proactively measures the response times of all types of J2EE applications on a 24x7 basis. Response time metrics from Vantage, integrated with the end-to-end performance analysis capabilities of Vantage Analyzer for J2EE™, enable IT managers to proactively identify and rapidly resolve tough performance problems.

Vantage also helps assess the impact of application, workload and infrastructure changes prior to deployment, providing pre-production service assurance. By managing applications at the business, transaction and infrastructure level, Vantage provides the critical insight needed to improve application service and maximize the value of application and infrastructure investments.

Vantage Analyzer for J2EE™ Advantages

- ▶▶ Visual landscape technology shows clear links between J2EE components
- ▶▶ Workload-level analysis
- ▶▶ Deep drill-down analysis of J2EE transaction activity
- ▶▶ Hot spot analysis for SQL, methods, performance and memory
- ▶▶ Real-time J2EE performance monitoring that allows you to select the parameters to be monitored
- ▶▶ CPU and wall-clock response time measurement
- ▶▶ Alerts keep you aware of issues before they occur
- ▶▶ Intelligent profiling technique speeds information delivery
- ▶▶ Lowest CPU overhead and memory usage of any J2EE performance solution available
- ▶▶ Proactive J2EE application service management aligns IT with business goals.

To learn more about Vantage, visit
www.compuware.com/vantage

Compuware products and professional services—delivering IT value

Compuware Corporation (NASDAQ: CPWR) maximizes the value IT brings to the business by helping CIOs more effectively manage the business of IT. Compuware solutions accelerate the development, improve the quality and enhance the performance of critical business systems while enabling CIOs to align and govern the entire IT portfolio, increasing efficiency, cost control and employee productivity throughout the IT organization. Founded in 1973, Compuware serves the world's leading IT organizations, including more than 90 percent of the Fortune 100 companies. Learn more about Compuware at www.compuware.com.

Compuware Corporation Corporate Headquarters
One Campus Martius
Detroit, MI 48226

For regional and international office contacts, please visit our web site at www.compuware.com

COMPUWARE®
www.compuware.com

