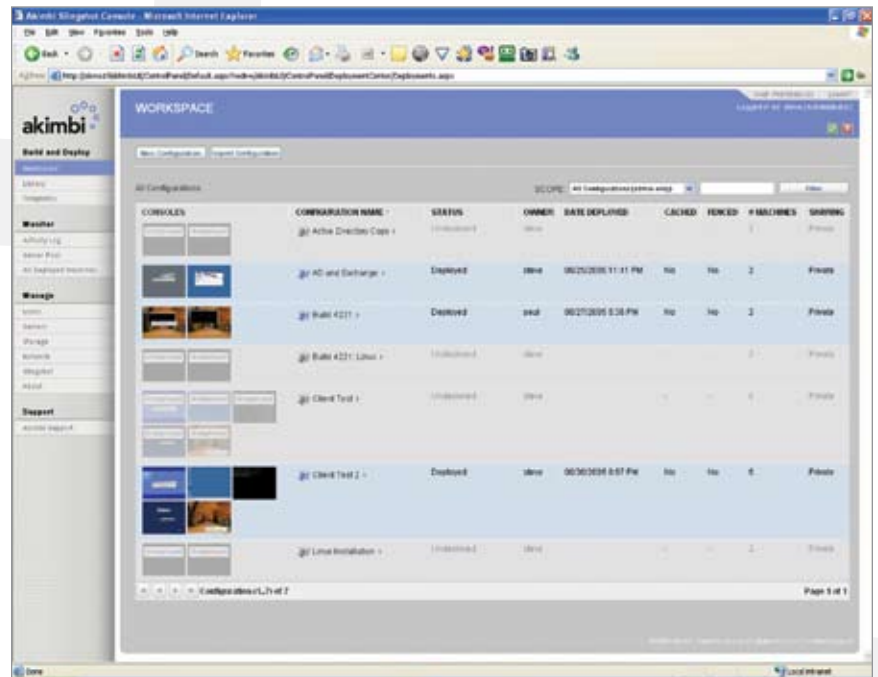




## VIRTUAL LAB AUTOMATION SYSTEM



Akimbi Slingshot is the industry's fastest, most comprehensive Virtual Lab Automation System – a new class of software development and test infrastructure that automates the rapid setup and teardown of even the most complex multi-machine software configurations.

Building on virtual machine technology from Microsoft or VMware, Akimbi Slingshot enables software developers and QA engineers to suspend, then capture to a shared storage library, the complete state of a “complex configuration” – that is, a collection of running, interdependent computer systems that span multiple machines. Over time, an organization builds up its library, including test scenarios, production environments, and customer configurations.

When a configuration in the library is later needed for development or test purposes, for example to test a new software build in the context of a customer production environment, Akimbi Slingshot can instantly deploy the entire configuration to the best available resources in a pool of managed servers – exactly as it was captured, running and ready for use.

Akimbi Slingshot-managed capture-and-restore operations literally take seconds. What would normally be a painstaking, multi-hour exercise (gathering machines, installing operating systems, installing and configuring applications, establishing inter-machine connections), is now a simple self-service provisioning task, accomplished with a single click of the mouse.

The benefits of Akimbi Slingshot extend to your company's bottom line. With Akimbi Slingshot, some of the world's most effective software development organizations are able to:

- reduce development and test equipment costs
- slash software development and test cycle times
- dramatically increase the quality of delivered software systems
- take the weekend off

“Akimbi Slingshot enables our software developers and QA engineers to easily capture complex system test environments and instantly share them across the organization. This process has allowed us to scale our business and accelerate our time to market.”

*Sriram Ramachandran  
Vice President Engineering  
Juniper Networks*

Pool and share server, networking, storage and other resources amongst development and test teams and individuals

Provide every developer or test engineer the equivalent of their own fully equipped data center with dedicated provisioning staff

Automatically and rapidly set up and tear down complex development and test configurations

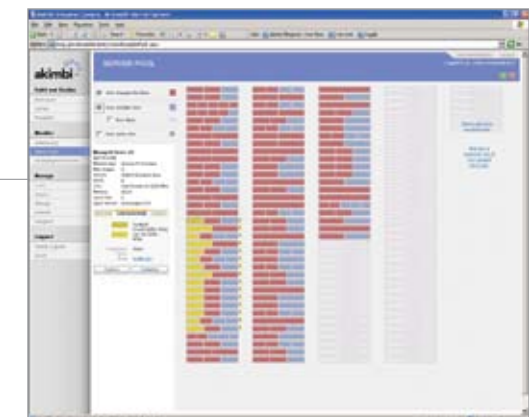
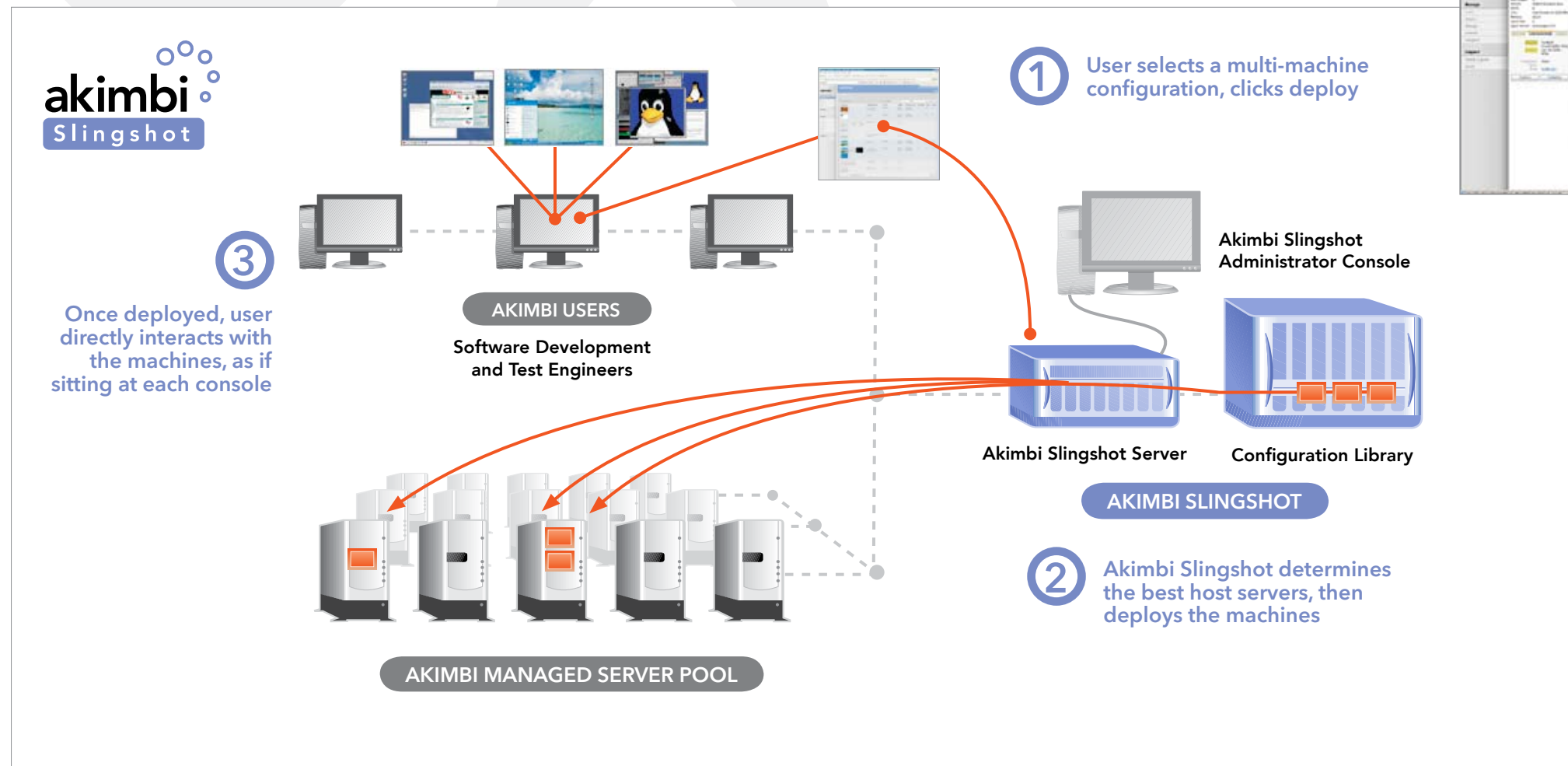
Suspend and capture a multi-system configuration exhibiting a bug or other unexpected behavior during test, ensuring reproducibility at debug time

Maintain a complete library of customer and production system environments for use on demand

Efficiently move and share multi-machine configurations across software development and test teams and facilities

# SIMPLIFY AND ACCELERATE SOFTWARE DEVELOPMENT AND TESTING WITH AKIMBI SLINGSHOT

Using Akimbi Slingshot is as easy as 1-2-3.



## AT-A-GLANCE MONITORING

Akimbi Slingshot provides administrators with a bird's-eye view of the managed server pool, with at-a-glance assessment of utilization, performance and activity – and the ability to drill in for more detailed information.

## OUT-OF-THE-BOX INTEGRATION SUPPORT FOR:

- Segue SilkTest
- Segue SilkCentral Test Manager
- Rational Functional Tester
- Rational Robot
- Mercury TestDirector
- Mercury QuickTest Pro
- Mercury WinRunner

Point. Click. Done.



With Akimbi Slingshot, configurations go from the library to the server pool to in-browser interaction in just 30 seconds – and with just a few clicks of your mouse.

## HARNESS THE POWER OF VIRTUAL MACHINE TECHNOLOGY

From the user's perspective, a virtual machine is indistinguishable from a normal server. Virtual machine technology provides encapsulation and insulation properties that Akimbi Slingshot leverages to capture, transport, store and restore configurations – even when changes occur to the underlying hardware or deployment environment in the process.

## SEAMLESSLY INTEGRATE WITH YOUR PROCESSES AND TOOLS

In addition to its intuitive browser-based user interface, Akimbi Slingshot provides a programmatic interface via its standards-based Web service (SOAP) API. Controlling Akimbi Slingshot from your automated test script, build system, bug tracking system or any other software component, custom or packaged, is a snap.

**Akimbi Slingshot is powerful infrastructure for software developers and QA engineers, enabling development teams to simultaneously accelerate delivery and improve software quality. Its capabilities provide numerous quantifiable benefits to organizations:**

- Reduce equipment-related capital and operating expenditures
- Accelerate functional testing
- Shave weeks or months off every software project
- Slash time and energy wasted finding and hoarding servers, storage and networking equipment
- Increase the number of certified configurations a new system supports
- Enable real-world unit testing
- Find and fix more bugs earlier in the development cycle
- Reproduce bugs reliably and reduce time spent in the debug phase
- Reduce the number of latent software defects that slip into production
- Eliminate upgrade breakage
- Deliver better product support
- Rapidly troubleshoot customer production problems
- Improve communication and productivity across distributed development environments

## FEATURES

### MULTI-MACHINE CONFIGURATIONS

- Create multi-machine configurations in seconds using machine templates – no limit on configuration machine count
- Mix and match VM and other imaging technologies within a single configuration
- Workspace – View configurations in use with thumbnail console views, public-private scoping and list filtering
- Act on machines in a configuration as a unit: suspend, multi-snapshot, revert to, shutdown, turn on, turn off, reset, deploy, undeploy, clone, capture to library and modify properties
- Private and public sharing of templates between users
- LiveLink™ capability – URL-based sharing of captured live configurations – “Send me a LiveLink”
- Interact with all configuration consoles side-by-side on a single browser page
- Setup machines in a configuration to boot in controlled sequence

### CONFIGURATION LIBRARY

- Up to five storage servers per Akimbi Slingshot server – virtually unlimited library growth
- Efficient storage compression algorithms maximize library entries per storage server
- Public and private library entries
- Scoped and filtered views of library
- Simultaneous use of library configurations by multiple users
- Near-instantaneous check out of configurations

### MEDIA LIBRARY

- Central repository for all development and test media
- Tag media with descriptive attributes
- Upload media directly from the browser or directly to the file share
- Easily make media available to Akimbi-managed virtual machines

### DEPLOYMENT

- Browser- or Web service-initiated deployment
- Copy from or execute from storage server
- Configuration or machine deployment granularity
- Side-by-side execution of cloned configurations across physical server boundaries, even when IP addresses duplicated on a subnet
- Selectable provisioning heuristic – rapid start, maximized performance
- Predictive caching and “elevator algorithms” tuned through learned system use patterns

### MACHINE TEMPLATES

- Machine templates for popular operating systems bundled with Akimbi Slingshot
- Wizard-driven creation of new templates
- New template creation via cloning and modification of existing templates
- Import pre-existing VM images for use as templates
- Template personalization on first use – automated assignment of MAC and IP addresses, and SID (for Windows systems)
- Automated installation of mouse and keyboard enhancements for VMs
- Private and public sharing of templates between users
- Arbitrary filtering of template views
- Optional Physical-to-Virtual (P2V) capability for storage and management of existing machines

### RESOURCE MANAGEMENT

- Automated tracking and issuance of IP addresses
- Multiple subnet management
- Storage server management: add, delete, refresh, modify properties
- Server management: add, delete, refresh, agent upgrade, remove from service, modify properties

### MONITORING

- Active unified view of server farm operations
- Drill down on server, configuration and machine details
- All deployed machines view
- Comprehensive event and job log viewer

### WEB SERVICES INTERFACE (AUTOMATION API)

- Standards-based interface (SOAP, WSDL, HTTP)
- Out-of-the-box integration with leading test automation tools
- Sample .NET and Java code illustrates use of APIs
- Full programmatic control of capture-and-restore operations

### ADMINISTRATION AND SECURITY

- User, permission and quota management
- Out-of-the-box LDAP support
- Administrator role assignment to multiple users
- User self-managed preferences
- Context sensitive, on-screen help

### SUPPORT

- Remote troubleshooting and upgrade delivery through Akimbi SupportLink™ connection
- Direct link to Akimbi support via user interface
- Multiple support packages available including 24x7x52 coverage with response guarantees

### INSTALLATION

- Standard Windows setup.exe installer for all components
- 15 minutes from installation to first deployment
- Automated addition of managed servers to deployment pool
- No special hardware required (e.g. SCSI, RAID, multiple CPUs)

### SUPPORTED VMM TECHNOLOGIES

- Microsoft Virtual Server 2005 Standard and Enterprise
- Microsoft Virtual Server 2005 R2 Standard and Enterprise
- VMware GSX Server 3.2
- Bundled Microsoft Virtual Server 2005 option

### SUPPORTED PLATFORMS

#### Guest Operating Systems

- Windows Server 2003 Standard Edition SP0, SP1
- Windows Server 2003 Enterprise Edition SP0, SP1
- Windows Server 2003 Web Edition
- Windows Small Business Server 2003 SP0, SP1
- Windows XP Professional SP0, SP1, SP2
- Windows XP Home Edition SP0, SP1, SP2
- Windows 2000 Professional SP0, SP1, SP2, SP3, SP4
- Windows 2000 Server SP0, SP1, SP2, SP3, SP4
- Windows 2000 Advanced Server SP0, SP1, SP2, SP3, SP4
- Windows NT® 4.0 Server SP6a
- Windows NT Workstation 4.0 SP0, SP6a
- Windows NT 4.0 Terminal Server Edition SP6a
- Windows Me
- Windows 98, 98 SE, 98 Customer Service Packs
- Windows 95 SP0, SP1
- Windows for Workgroups 3.11
- Windows 3.1
- MS-DOS 6.22
- Mandrake Linux 8.0, 8.1, 8.2, 9.0, 9.1, 9.2, 10.0, 10.1
- Red Hat Linux 6.2, 7.0, 7.1, 7.2, 7.3, 8.0, 9.0
- Red Hat Enterprise Linux (AS, ES and WS) 2.1, including Update 6
- Red Hat Enterprise Linux (AS, ES and WS) 3.0, including Update 4
- Red Hat Enterprise Linux (AS, ES and WS) 4.0
- SuSE Linux 7.3, 8.0, 8.1, 8.2, 9.0, 9.1, 9.2, 9.3
- SuSE Linux Enterprise Server 7, including Service Pack 2
- SuSE Linux Enterprise Server 8, including Service Pack 3
- SuSE Linux Enterprise Server 9, including Service Pack 1
- Turbolinux Server 7.0, 8.0
- Turbolinux Workstation 8.0
- NetWare 4.2 Support Pack 9
- NetWare 5.1 Support Pack 6
- NetWare 6.0 Support Pack 3
- NetWare 6.5 Support Pack 1
- FreeBSD 4.0-4.6.2
- FreeBSD 4.8, 4.9, 5.0, 5.2
- Solaris 9 x86 Platform Edition
- Solaris 10 x86 Platform Edition

#### Akimbi Slingshot and Its Managed Servers

- Windows Server 2003, Standard, Enterprise and Datacenter Editions
- Windows XP SP2 Professional (evaluation purposes only)

#### Akimbi Tools

- Windows XP SP0, SP1, SP2
- Windows 2000 Professional SP4
- Windows 2000 Server SP4
- Windows 2003 Standard Edition SP0, SP1
- Windows 2003 Enterprise Edition SP0, SP1
- Red Hat Enterprise Linux 3 (AS, ES, WS)
- Red Hat Enterprise Linux 4 (AS, ES, WS)
- Fedora Core 4
- White Box Linux Release 4
- Suse Linux 9.3
- Red Hat Linux 9.0



akimbi

1400 Fashion Island Blvd.  
Suite 900  
San Mateo, California  
94404

+1.650.356.4400 phone  
+1.650.356.4450 fax  
www.akimbi.com